



2024 ANNUAL REPORT

Blue Alliance

Blue Alliance

NORTH MINDORO
MARINE PROTECTED AREAS

NORTHEAST PALAWAN
MARINE PROTECTED AREAS

OUR GLOBAL PROGRESS AND IMPACT DURING 2024



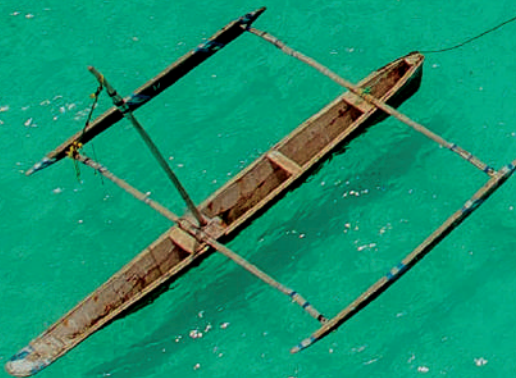
1,700,000 ha

coral reef ecosystems in Key Biodiversity Areas benefiting from enhanced biodiversity protection and control of destructive and unsustainable fishing activities



110 MPAs

(in four MPA networks) under mandated long-term management



70+

threatened species being protected, including sharks, turtles, and corals



Working towards enhancing the livelihoods of

26,500+

coastal community members (primarily fishers)



127 jobs created

in our MPAs and
Reef-Positive Businesses



12 Reef-Positive Businesses

in development in the Blue Economy, 3 generating
annual revenues
above US\$300k



15,238 hours

of patrols conducted



Working towards the conservation and
restoration of mangroves, with the
potential to sequester up to

300,000t

of CO2 every year

A vibrant clownfish with orange, white, and blue stripes is swimming towards the viewer in a coral reef. The coral is a mix of brown and blue, creating a rich, textured background. The lighting is dramatic, highlighting the fish's colors against the darker reef.

**Imagine
a world where
160,000
local fishers**

earn a sustainable income, where communities thrive, and where 9 million hectares of globally essential coral reefs, once threatened, are teeming with life by 2030.

**This is not just a
dream: this is our
vision.**

CONTENTS

01

**About Blue Alliance
Marine Protected Areas**
8

02

**Who
We Are**
10

03

Governance
13

04

Our Impact
15

05

Our Approach
21

How we work in the field
Our financial approach
Reef-Positive Businesses
The MPA blended finance
facility

06

**Our Marine
Protected Areas (MPAs)**
29

Species in our MPAs
Mindoro
Palawan

07

**Outlook
and Targets**
50

08

Our Partners
52

CREDITS

TEXT: Blue Alliance team

PHOTOGRAPHS : Ram Yoro (cover), ©Blue Alliance, Thomas Vignaud, Luke Saus, Gabriel Barathieu, Angeliqe Brathwaite, Fabrice Dudenhofer, Gary Lotter, Jasper Anhede, Tompotika Dive Lodge, Shutterstock, Adobe Stock, Cassandre Vandamme, Olivia Grubenmann

DESIGN : Jeanne-Marie Monpeurt / funyjane@gmail.com

MESSAGE FROM OUR EXECUTIVE DIRECTOR



Nicolas Pascal
Executive Director
Blue Alliance Marine
Protected Areas

2024 has been marked by continued progress and strategic consolidation for Blue Alliance. We have expanded our operations in the Philippines, strengthened the management of large Marine Protected Areas (MPAs) across three countries, supported the development of twelve reef-positive enterprises within the Blue Economy, and successfully launched an impact loan facility with the backing of a private investor. These achievements reflect the dedication and collaborative spirit of our team, whose efforts have been instrumental in advancing our mission.

Our model is distinctive in its dual focus: managing Reef-Positive Businesses while simultaneously operating large-scale MPAs under a unified governance framework. This integrated approach ensures that conservation and economic development are pursued in tandem, with shared objectives and mutual reinforcement.

We are actively building a comprehensive Blue Economy ecosystem around large MPAs. We believe that operating at the seascape level—spanning tens of thousands to millions of hectares—is both an effective and equitable strategy for addressing the intertwined challenges of climate change, biodiversity loss, and sustainable development. At this scale, MPAs are capable of delivering essential ecosystem services, generating substantial benefits for both people and nature, and attracting meaningful investment. Their ecological breadth

allows for the inclusion of diverse habitats, including pelagic and deep-sea zones often excluded from smaller MPAs, and ensures critical ecological connectivity. In coral reef systems, for example, both source and sink zones can be protected, enhancing resilience and biodiversity.

Traditional conservation efforts, often limited to small protected areas, are insufficient to address the scale of today's environmental crises. In contrast, large MPAs offer a transformative opportunity to align ecological integrity with socio-economic development. By fostering a conservation-led economy, we are demonstrating how nature and communities can thrive together.

Although it is still too early to fully evaluate the ecological and social impacts of our efforts, we are already witnessing promising signs of recovery among key species such as turtles, napoleon wrasse, and groupers, as well as commercially important species like snapper and emperor fish. Additionally, we are seeing a growing number of fishers expressing satisfaction with the fishery management and finding new employment opportunities — a hopeful indication that our work is contributing to a positive and sustainable transformation.

MESSAGE FROM THE SCIENCE DIRECTOR



Angelique Brathwaite
Director Conservation
& Science & Co-Founder

Blue Alliance (BA) started with a tiny team of two in 2015 and has grown in numbers and purpose, building a formidable collective along the way. BA is made up of “sea souls” driven by a passion for the ocean and all that live within — led by our CEO, Nico — who is happiest in the water. Many of us share this love of the sea, from our driver Alvin in the Philippines (now a diver), our female rangers in Zanzibar (who started from a position of not being able to swim and are now avid snorkelers) and our CFO Célia (a swim champion who just earned her open water certification). The job is not merely a 9-5; it is our purpose.

Demonstrating positive impact is in our DNA. BA has never been content to go through the motions and simply monitor and measure. We need to know whether our work is actually making a difference; if it isn't, we pivot smartly to ensure change.

Our NGO was founded on changing up the way marine conservation is financed, which has led us to join forces with other like-minded innovators including BNP Paribas as well as the Global Fund for Coral Reefs (GFCR), UBS Optimus Foundation and the Ocean Risk and Resilience Action Alliance (ORRAA). People within these organisations started out as trusted partners and have become friends with a shared goal of marine conservation.

Together, we're exploring ways to close the financing gap for MPA management and ensure that coastal communities have options and opportunities to improve their livelihoods.

It is difficult to monitor real change, specifically from our MPAs, in an ecosystem as complex as a coral reef. To condense them into a few metrics is a seemingly impossible task, but, as we say in Barbados, needs must. As we pull from some of the most creative science and financial minds, working with those who desire to see real change, our methods continue to evolve.

Through our monitoring efforts, we know that coral cover has remained essentially the same since our last report, while fish biomass has increased in some MPAs, and that BA has directly provided some 125 jobs and supported tens of thousands in marine-based activities.

At a time when there seems to be so much “push-back” against science and environmental conservation, and a reduction in funding, our work at BA in crafting financial solutions and enhancing MPA management is more important than ever.

1 ABOUT BLUE ALLIANCE MARINE PROTECTED AREAS



1 ABOUT BLUE ALLIANCE MARINE PROTECTED AREAS

Founded in 2015, Blue Alliance manages and finances large-scale Marine Protected Areas (MPAs) in some of the most biodiverse places on earth to ensure their long-term conservation and livelihood benefits.

We operate under long-term delegated management agreements with governments to implement state-of-the-art conservation, compliance and resource management practices, ensuring regeneration of marine life and improving the food security and livelihoods of coastal communities.

Blue Alliance has developed a self-sustaining model for managing large MPAs by establishing Blue Economy

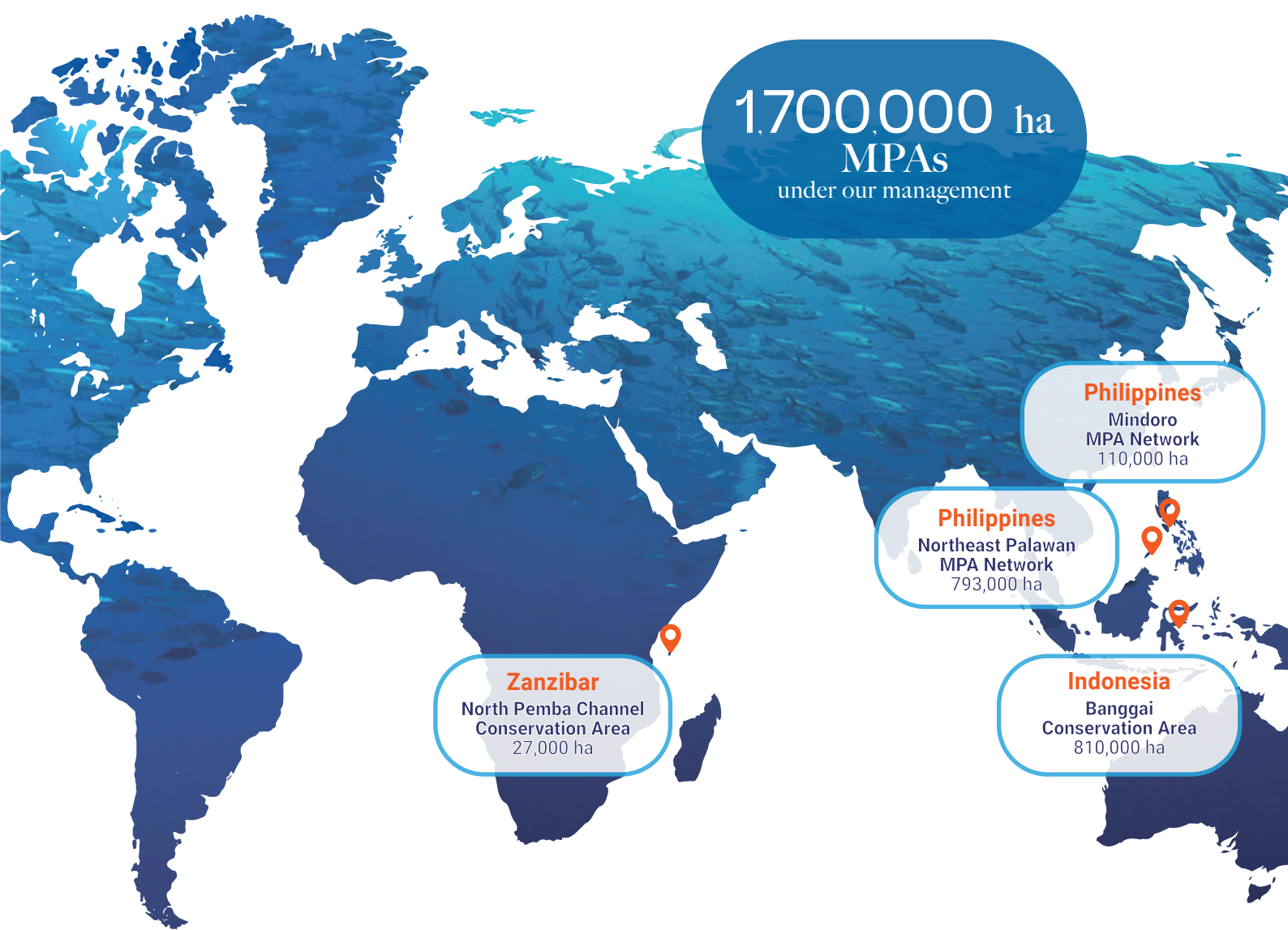
social enterprises that positively impact coral reefs. These enterprises, owned by Blue Alliance, help alleviate poverty and reinvest all profits into MPAs.

With a team of over 110 professionals, the organisation currently oversees 1.7 million hectares of coral reef ecosystems across MPAs in Indonesia, the Philippines, and Tanzania.

By integrating conservation with Reef-Positive Businesses, Blue Alliance is pioneering a financially sustainable model for marine conservation. The model is scalable. Blue Alliance aims to directly manage 9,000,000 hectares of large MPAs by 2030, thereby regenerating entire marine ecosystems.

Blue Alliance headquarters are in France with non-profit entities, and Reef-Positive Businesses in Indonesia, the Philippines and Tanzania and two satellite funding offices in the United States and United Kingdom.

Together we are helping the planet, one Marine Protected Area at a time.



2 WHO WE ARE

OUR COLLECTIVE EXPERIENCE



80+ years
MPA operational management



100+ years
Coral reef and fisheries science



30+ years
Community-based aquaculture



40+ years
Ecotourism



50+ years
Innovative blended finance

OUR GLOBAL TEAM

Our global executive team provides robust support to our local Blue Alliance sister entities and Reef-Positive Businesses, offering a rich blend of expertise in effective co-management and sustainable business development.



Nicolas Pascal
Executive Director
and Co-Founder



Angelique Brathwaite
Conservation & Science
Director and Co-Founder



Gary Lotter
Ecotourism
Director



Célia Marcadal
Finance and Human
Resources Director



Arnaud Gotanegre
Operations Director



Joel Bertani
Aquaculture Director



Célia Berche
Manager, Partnership
& Fundraising



Victor Le Bas
Partnership Officer



Ryan Khoula
Junior Financial
Controller



Romain Martel
Finance Business
Partner



Denmark Recamara
Science Manager



Daniel Sadd
Fisheries Biologist



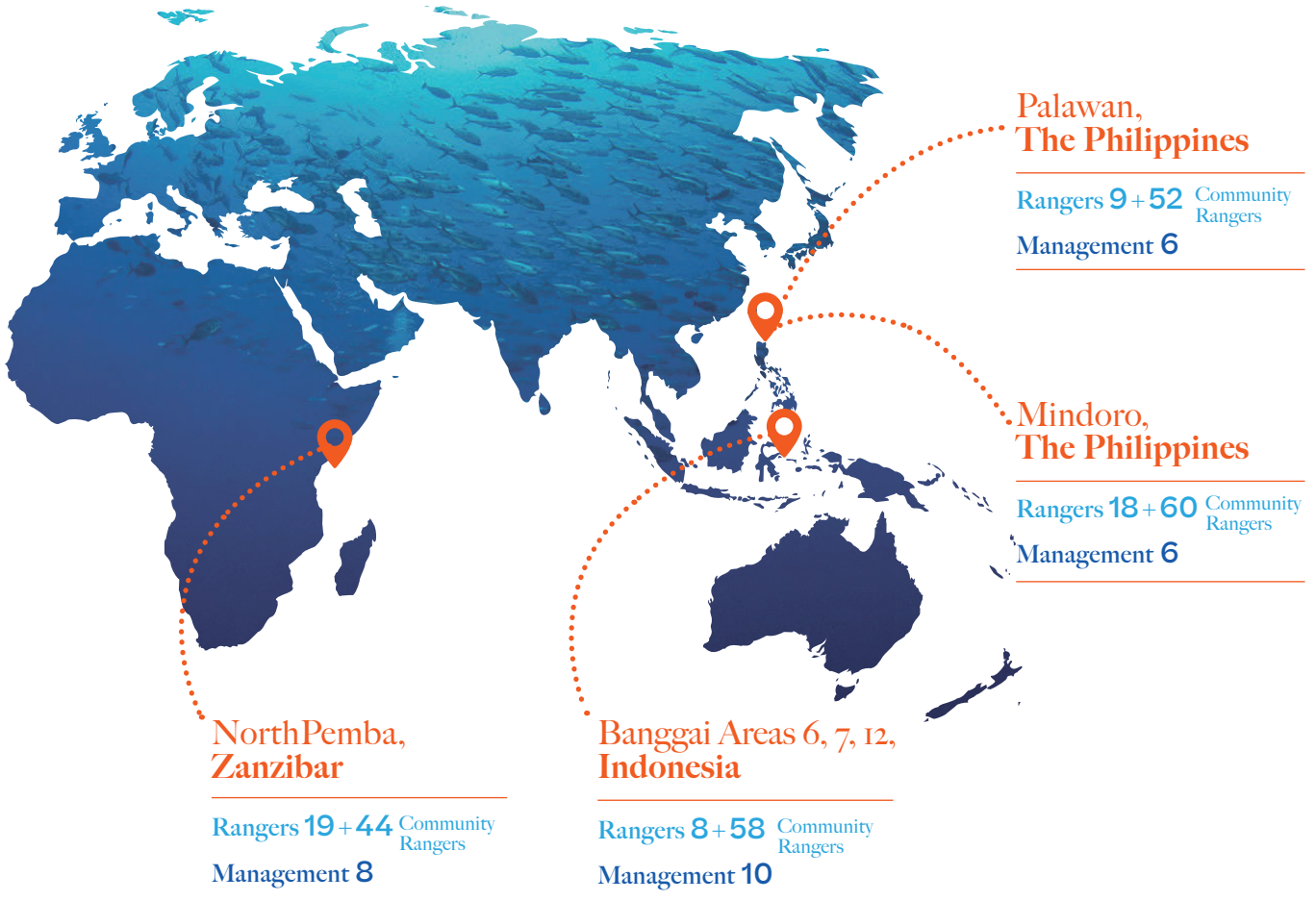
Cassandre Vandamme
Marine Ecologist



Katherine Wallis
Communications Manager

MPA TEAMS

More than **100** rangers, community officers, and project managers are implementing activities in science, conservation, compliance, sustainable revenues, and community development.



Bonifacio Tobias
National Manager
Blue Alliance Philippines
The Philippines

&



Russel Climaco
MPA Manager
Blue Alliance Philippines
The Philippines

3 GOVERNANCE



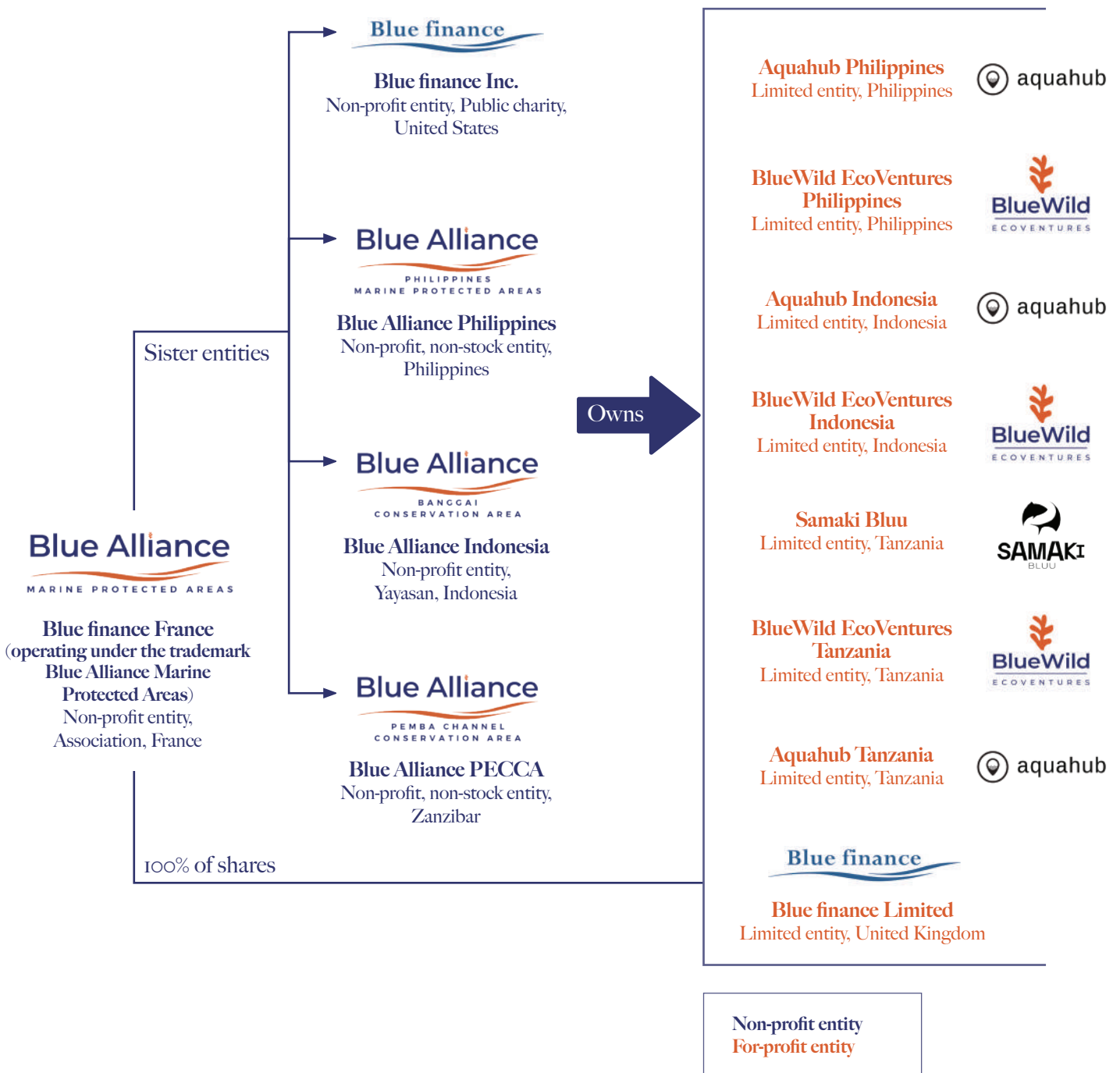
3 GOVERNANCE

Our group is structured as a holding around a non-profit entity.

The holding mother company is the non-profit Blue Alliance, registered in France. France serves as the central hub of our operations, providing financing and strategic oversight for the effective management of Marine Protected Areas and Reef-Positive Businesses (RPBs).

Blue Alliance holding has incorporated 3 Blue Alliance local non-profit sister entities across Indonesia, the Philippines and Tanzania, 1 satellite funding office in the United States and also owns 100% of the shares of the for-profit entity Blue finance UK, our investment vehicle for the Reef-Positive Businesses (RPBs).

The 7 Reef-Positive-Businesses in operations are registered in Indonesia, the Philippines and Tanzania. They are owned by Blue finance UK or by the local Blue Alliance non-profit entities, depending on local legal requirements.



4 OUR IMPACT



OUR IMPACT IN THE FIELD



Reef fish regeneration

We aim to increase fishable fish biomass in MPAs by +25% by 2035, from baselines of 207.5 kg/ha (Philippines), 255 kg/ha (Indonesia), and 150 kg/ha (Tanzania). Biomass is monitored biannually via underwater surveys and reflects reduced fishing pressure and ecosystem recovery through targeted enforcement.

Coral reef ecosystem protection

We aim to improve management effectiveness in 1.7 million hectares of MPAs to a Management Effectiveness Assessment Tool (MEAT) score >63 by 2035 (baseline 2024: 33). MEAT covers governance, financing, enforcement, monitoring and community engagement—ensuring MPAs are resilient, well-managed and enduring.



Improved catch for artisanal fishers

We aim to increase fish catch productivity by +25% by 2035, from baselines of 0.8 kg/h (Philippines), 1 kg/h (Indonesia), and 1.6 kg/h (Tanzania). Measured through annual Catch Per Unit Effort (CPUE) campaigns with local fishers under standardised conditions, this metric reflects improved income potential and healthier, better-managed fish stocks.

Jobs and sustainable revenue creation

We track new full-time equivalent (FTE) jobs and sustainable revenues from MPAs and Reef-Positive Businesses (RPBs), reflecting improved livelihoods. Revenues come from aquaculture, sustainable seafood, and ecotourism. Certified annually by external experts, this metric supports poverty reduction and economic resilience in remote communities.



4 OUR IMPACT

People supported

We measure the number of people trained, supported through livelihood programmes, and fishers benefitting from improved catches. This metric reflects indirect livelihood gains via training, resources, or increased harvests.

Data is collected annually, disaggregated by gender and age, and certified by external experts to track community resilience and impact. Our targets are 1039 jobs by 2030 and at least 216,00 households supported by 2030.



Carbon emissions reduced and/avoided

We track Total CO₂ emissions avoided through mangrove protection using GIS analysis to assess reduced deforestation. Mangroves are vital carbon sinks and support climate adaptation and mitigation. The metric reflects the area under effective management, including enforcement. Where blue carbon credits apply, results are verified by external experts. Targets vary by MPA.

Revenue for conservation

We track funds generated by Reef-Positive Businesses that flow into MPA management via dividends or revenue sharing. These businesses help close critical financing gaps while supporting reef ecosystems.

This metric directly reflects sustainable financing for conservation and is certified annually by external experts.





Reducing poverty

Poverty leads directly to unsustainable fishing, pollution, the clearing of mangroves, and many other forms of environmental degradation. In addition to creating jobs, we are empowering communities through training, mentoring, swimming lessons and dive certifications, as well as aquaculture and farming improvements.

Introducing responsible ecotourism practices

Through our ecotourism division, BlueWild EcoVentures, we introduce experiences for mindful travellers as well as marine education programmes.



Increasing climate change resilience and contributing to climate risk mitigation

By enhancing the health of natural coastal and marine ecosystems, our work protects coastal communities from the impacts of extreme weather events and contributes to climate change mitigation. Reducing local impacts will confer additional resilience to climate change on coral reef ecosystems.






Reduction of land-based pollution

We are deeply concerned about land-based pollution. We are engaging with communities and innovative companies as well as working with our own programmes, to support mitigation mechanisms and implement responsible solutions.



HOW WE MEASURE AND VERIFY OUR IMPACTS

Five identified and agreed-upon impact metrics serve as indicators of the impacts on nature and people that are being monitored in each Marine Protected Area.

Impact metric	Measurement
 <p>Effectively managed coral reefs</p>	<p>Coral reef ecosystems under effective MPA/OECM management, measured through the MPA Management Effectiveness Assessment Tool (MEAT) score.</p>
 <p>Fish biomass</p>	<p>% increase in fish biomass, measured via Underwater Visual Census (UVC).</p>
 <p>Improved catch by artisanal fishers</p>	<p>% increase in fish productivity, measured through CPUE surveys around the MPAs.</p>
 <p>People supported through employment, livelihood programmes, and improved fish catch</p>	<p>Census of full-time equivalent employment; the number of people trained through our livelihood programmes; beneficiaries of our livelihood programmes; and number of fishers benefitting from improved fish catch.</p>
 <p>Mangroves conserved*</p>	<p>Carbon sequestration, measured by hectares of mangroves conserved per year.</p>

*In development

IMPACT AND SDGs

Our work is focused on building significant long-term impacts. Whether in today's actions or long-term planning, to us, impact always comes first. Our MPA work is aligned with the United Nations Development Programme's Sustainable Development Goals (SDGs). We are actively enabling ocean-positive environmental and societal impacts in alignment with the following SDGs:



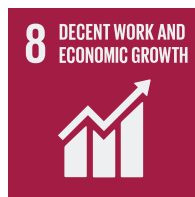
Reduction of poverty: we help coastal communities to sustainably increase fishery productivity and to develop alternative sources of protein.



We help coastal communities to **sustainably achieve food security and improved nutrition**, while promoting sustainable agriculture.



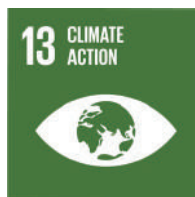
We work towards **gender equality** via female-focused job creation and training.



Growing **sustainable tourism** and community based aquaculture businesses to **create jobs**.



Reducing waste and promoting resource efficiency and responsible practices, specifically within Reef-Positive Businesses.



Increasing climate change resilience and contributing to climate risk mitigation through improving the health of natural marine and coastal ecosystems, and protection for coastal communities from climate change-derived high-energy events.



Regeneration of coral reef ecosystems and endangered species - we focus on reducing harmful fishing practices through a combination of enhanced law enforcement and awareness initiatives, long-term community development and engagement programmes, and developing alternative ways of earning a living.



We strengthen the **means of implementation** and revitalise the **global partnership for sustainable development**.

5 OUR APPROACH



OUR PILLARS

Our approach is based on a cohesive four-pillar philosophy which provides a secure foundation for the long-term management of large Marine Protected Areas, regenerating marine biodiversity, and improving the lives of coastal communities.



Long-term delegation of management of large MPAs signed with governments to improve their resilience and effectiveness.



Implementation of MPA field activities in compliance and enforcement, community development and science & conservation.



Development of our portfolio of Reef-Positive Businesses
We develop social enterprises in and around the MPAs that positively impact coral reefs. These enterprises, owned by Blue Alliance, help alleviate poverty and reinvest all profits into MPAs. They enable our progressive independence from donors.



A blended finance vehicle providing adequate up-front and early-stage capital for both the MPAs and associated Reef-Positive Businesses.





PILLAR 1 : Long-term delegation of management of large MPAs signed with governments to improve MPA resilience and effectiveness.

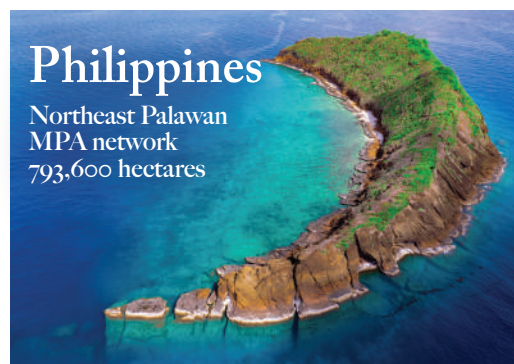
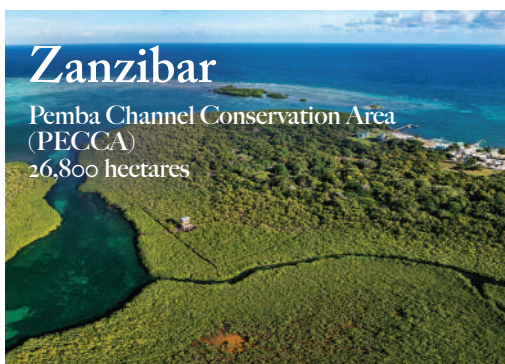
OUR MANDATES FOR MARINE PROTECTED AREAS

We have received long-term mandates to manage 1,700,000 hectares of MPAs on behalf of the governments of Indonesia, the Philippines, and Zanzibar to improve MPA resilience and effectiveness. These areas are globally recognised for their biodiversity and unique flora and fauna, with all being critical world Key Biodiversity Areas and two being UNESCO World Heritage Sites or Biosphere Reserves.

The MPAs are previously designated, some over a decade ago, with all aspects of Free, Prior, and Informed Consent (FPIC) respected during stakeholder consultations and in accordance with local and national policies. Nonetheless, the MPAs had been largely inactive since their designation ('paper parks') and did not prevent the intensification of destructive fishing (e.g., with dynamite, poison or illegal fishing gear) on coral reefs. These threats come in addition to shark finning, manta ray killing, turtle egg poaching and intensive live reef fisheries. There is an urgent need to work with governments and collaborate in effective management and enforcement of the MPAs.

Every MPA combines sustainable artisanal fishing zones, regenerative aquaculture zones, ecotourism zones and no-fishing zones. Blue Alliance is the body responsible for carrying out agreed operational functions. Activities are aligned with government policy in each case. Blue Alliance maintains full responsibility and execution of all management functions and is accountable to each government. Ownership remains with each government, and they determine policy.

By delegating the day-to-day management of MPAs to Blue Alliance and our local partners, governments can focus on core functions such as regulation and compliance. They also have an oversight role, including approving the annual objectives and plans for each MPA, based on insights from an advisory committee made up of local stakeholders.





PILLAR 2 : Implementation of MPA field activities in compliance and enforcement, community development and science and conservation.

OUR ACTIVITIES IN THE MPAs



Community development



Compliance & enforcement



Science & conservation

1 Community development

We work closely with governments and local communities to identify and develop Blue Economy solutions to sustainably enhance the livelihoods of coastal community members with a strong focus on coastal fisher household members. We do this by creating sustainable employment opportunities and enabling micro-enterprises that empower both men and women.

OUR KEY COMMUNITY DEVELOPMENT PROGRAMMES INCLUDE:

- Hiring local community members to work in Marine Protected Areas
- Developing aquaculture, fishery and ecotourism micro-enterprises
- Creating new income-generating activities as viable alternatives to unsustainable exploitation
- Economic empowerment for women and social entrepreneurship
- Protecting communities from flooding through coral reef and mangrove conservation

2 Compliance & enforcement

Patrolling MPAs underscores our commitment, empowers local rangers, and creates opportunities for community engagement and raising awareness. As official co-management entities, our role is to enhance compliance with fisheries and environmental laws through surveillance and community engagement. We enforce fisheries legislation via joint patrols with local authorities, promoting recovery within MPAs and sustainable fishing beyond their boundaries.

OUR KEY COMPLIANCE PROGRAMMES INCLUDE:

- Reducing illegal and destructive fishing
- Co-patrolling with law enforcement authorities
- Collaborative work with governments to develop and enforce new regulations and compliance plans for sustainable fisheries and tourism
- Driving conservation awareness
- Joint 24/7/365 patrols with local authorities
- Demarcation of MPAs through highly visible boundary marker buoys
- Comprehensive, ongoing training of rangers
- Logistical and equipment support
- Digital solutions to advance monitoring efforts e.g., the Earth Ranger application



3 Science & conservation

Everything we do is based on scientific data, including evaluating our own performance. Management decisions within each MPA are informed by data collected through wildlife monitoring and conservation programmes. Our expert science team monitors the health of coral reefs and the impact of our management interventions with comprehensive underwater assessments of fish and coral communities, both inside and outside the MPAs.

OUR KEY SCIENCE & CONSERVATION PROGRAMMES INCLUDE:

- Biophysical assessments of coral reef ecosystems
- Commercial fish in-water surveys
- Fish catch monitoring and fish landing surveys
- Experimental CPUE (catch per unit effort) measurements
- Baited/un-baited remote underwater video systems (BRUVS) for sharks and fish
- GIS (geographic information system) analysis and drone surveys of mangrove forest cover
- Water quality monitoring
- Crown-of-thorns starfish (CoTS) monitoring and collection programmes
- Sea turtle nesting monitoring relocation and conservation
- Identification of spawning aggregations (SPAGs) and critical nursery sites for threatened and important species
- Environmental eDNA studies conducted every 3 years
- Education around sustainable fishing practices and reduction of bycatch
- Exploration of new technologies - photogrammetry, AI for corals and fish, etc.
- Designing sustainable fishery management plans



PILLAR 3 : Development of our pipeline of Reef-Positive Businesses.

REEF-POSITIVE BUSINESSES IN AND AROUND OUR MPAs

Reef-Positive Businesses

Blue Alliance owns and manages a portfolio of bankable local Reef-Positive Businesses (RPBs) around the MPAs that reduce specific drivers of coral reef ecosystem degradation and support local communities. Business models have been developed in community-based aquaculture, sustainable seafood and responsible ecotourism. Each business has been set up as a for-profit enterprise, owned fully or in majority by Blue Alliance.

Each company reduces specific drivers of coral reef ecosystem degradation, alleviates poverty and generates long-term income for our MPAs through their dividends. A critical part of each project is the inclusion of communities in participatory management.

Our RPBs are different from regular conservation projects because their design is centred around revenue generating activities that help recover project costs and generate dividends. The businesses are the result of feasibility activities conducted over several years to select the most promising Reef-Positive Business models. Feasibility was based on a scoring matrix with +45 indicators on triple bottom line impacts (ecological, social, economic), upside value potential (business, market opportunities and entrepreneurial capacities) and enabling conditions (legal, environmental regulations around the MPAs, concession lease, government support).

Blue Alliance's MPAs aim to become self-sustaining through the dividends received from these Reef-Positive Businesses.

OUR REEF-POSITIVE BUSINESSES INCLUDE:

- **The Aquahub** group of companies which support coastal communities in transitioning from wild stock depletion to sustainable aquaculture, cultivating high-value seafood while regenerating essential habitats such as mangroves and seagrass meadows.
- **The Samaki Bluu company** which works directly with fishers to improve supply chains, increase their revenues, and promote responsible harvesting practices that ensure the long-term viability of fish stocks.
- **BlueWild EcoVentures group** of companies which offer eco-conscious travellers immersive, low-impact experiences and facilities that create employment opportunities in local communities.

For each business, we conduct an Environmental & Social Due Diligence (ESDD) to analyse potential negative impacts of developments linked to the investment into the RPBs. No major environmental, social and governance risks have been identified for the RPBs. Based on the ESDD, a detailed Environmental and Social Action Plan (ESAP) has been produced for each RPB. The ESAPs describe mitigation measures for the minor risks identified and timelines for implementation. ESAP implementation is monitored closely by impact investors.



PILLAR 4 : A blended finance vehicle providing adequate up-front and early-stage capital for both the MPAs and associated Reef-Positive Businesses.

Blue finance

OUR BLENDED FINANCE VEHICLE

MPA blended finance vehicle

We have launched a versatile blended finance vehicle for Marine Protected Areas (MPAs). The vehicle blends 3 instruments:

- 1. Senior impact loan facility:** Provides concessional financing for initial working capital and equipment for the Reef-Positive Businesses. It offers patient capital and performance-linked returns linked to environmental and social outcomes. Capital comes from commercial banks, impact investors and family offices, with all lenders ranking equally (pari-passu).
- 2. Recoverable grant facility:** Provides capital during the start-up phases of the businesses. Repayment is triggered by outstanding financial performance of the RPBs.
- 3. Non-recoverable grant facility:** Provides (i) technical assistance and capital during the business start-up phase and, (ii) financing for the MPAs' day-to-day conservation activities until these grants can be gradually replaced by dividends from the Reef-Positive Businesses.

A climate insurance scheme has been designed to mitigate major climate event risks for our MPA networks and Reef-Positive Businesses. The insurance is provided by AXA Climate with support from Humanity Insured.

What we need to achieve our goals:

Over the next five years, we are looking to secure the following funding for the facility:

- Grants to accelerate conservation activities and investment readiness in more than 3,000,000 hectares of Marine Protected Areas.
- Impact loans and refundable grants for the pipeline of Reef-Positive Businesses that will alleviate poverty and generate long-term income for our MPAs.

OUR FINANCIAL MODEL

Our approach creates a self-sustaining model for our MPAs, ensuring long-term impacts on marine biodiversity and the livelihoods of coastal communities. Our Reef-Positive Businesses reinvest all their dividends into MPA management, contributing to their sustainable financing.

Why is it crucial to support the development of Marine Protected Areas?

Well-managed and financed MPAs are essential to global efforts to “replenish biodiversity and nourish the growing human population” (IUCN, 2018). Benefits that flow from improved marine ecosystems include enhanced food supply and fishing incomes for coastal communities, opportunities for Blue Economy businesses, shoreline protection and greater resilience to climate change. Managing MPAs requires continuous funding not only for set-up but also for day-to-day operations such as monitoring, staffing and equipment. With public finance being a scarce and precious resource, the mobilisation of additional funds and revenue models for marine conservation is crucial for meeting the financing needs of Agenda 2030.

What will the Blue Finance facility do?

The Blue Finance facility will support the development of innovative Reef-Positive Businesses that bolster the Blue Economy in and around the MPAs. Each Reef-Positive Business reduces specific drivers of coral reef ecosystem degradation, aids in alleviating poverty within vulnerable communities, and contributes financially to MPA management through dividends. The vehicle covers financing needs for the initial working capital and CAPEX of the Reef-Positive Businesses.

The vehicle blends grants, refundable grants and impact loan facility. The vehicle is structured with a long-term maturity to meet the needs for “patient capital” for social enterprises engaged with natural capital and local communities. The interest rate will vary based on the achievement of specific social and environmental outcomes to incentivise local businesses to maximise their positive impact on the environment and livelihoods of the local population.



An underwater photograph of a vibrant coral reef. In the foreground, a large, light-colored sea anemone with many tentacles is prominent. Several clownfish are visible, including a large red and white one and a smaller orange and white one. In the background, a large, branching tree coral with a yellowish-orange hue stands out against the deep blue water. The overall scene is rich in marine life and color.

6 OUR CO-MANAGED MARINE PROTECTED AREAS

ICONIC, IMPORTANT & THREATENED SPECIES IN OUR MPAs

We are dedicated to safeguarding all marine fauna by preserving critical habitats and spreading awareness. We further protect threatened species by combating destructive and illegal fishing practices, recommending sustainable fishing gear and methods, and educating fishers in the release of bycatch. Our efforts contribute to protecting more than 70 IUCN Red List threatened species within our MPAs.



Hawksbill Turtle
Critically endangered (CR)



Nassau grouper
Critically endangered (CR)



Mobula rays
Endangered (EN)



Thresher shark
Endangered (EN)



**Humphead wrasse
(Napoleon fish)**
Endangered (EN)



Acropora
Status varies between species

THE PHILIPPINES MINDORO MPA NETWORK



Mindoro

Mindoro is a biodiversity hotspot featuring over 40 species of coral and 300 species of fish, as well as iconic and threatened species like pelagic thresher sharks, marine turtles, giant clams, and a variety of marine mammals. Mindoro is part of the Verde Island Passage (VIP), which is recognised as a global centre of marine biodiversity, with over 1,000 documented species – more than anywhere else on the planet. Puerto Galera is a UNESCO biosphere reserve – an area that is aiming to balance conservation of biodiversity and socio-cultural and economic development.

We are currently co-managing 12 Locally Managed Marine Protected Areas (LMMPAs) in Mindoro covering 112,000 ha with enhanced biodiversity protection and control of destructive and unsustainable fishing activities, including 27,200 ha of coral reefs, through 10-year renewable co-management service agreements with Local Government Units (LGUs).



110,000+ ha of coral reef ecosystems with enhanced biodiversity protection and control of destructive and unsustainable fishing activities



40+ threatened species being protected, including sharks, turtles, and corals



Working towards enhancing the livelihoods of **6,000+** coastal community members (primarily fishers)



38 full-time and part-time jobs created in our MPAs and Reef-Positive Businesses



5,162+ patrol hours conducted during 2024



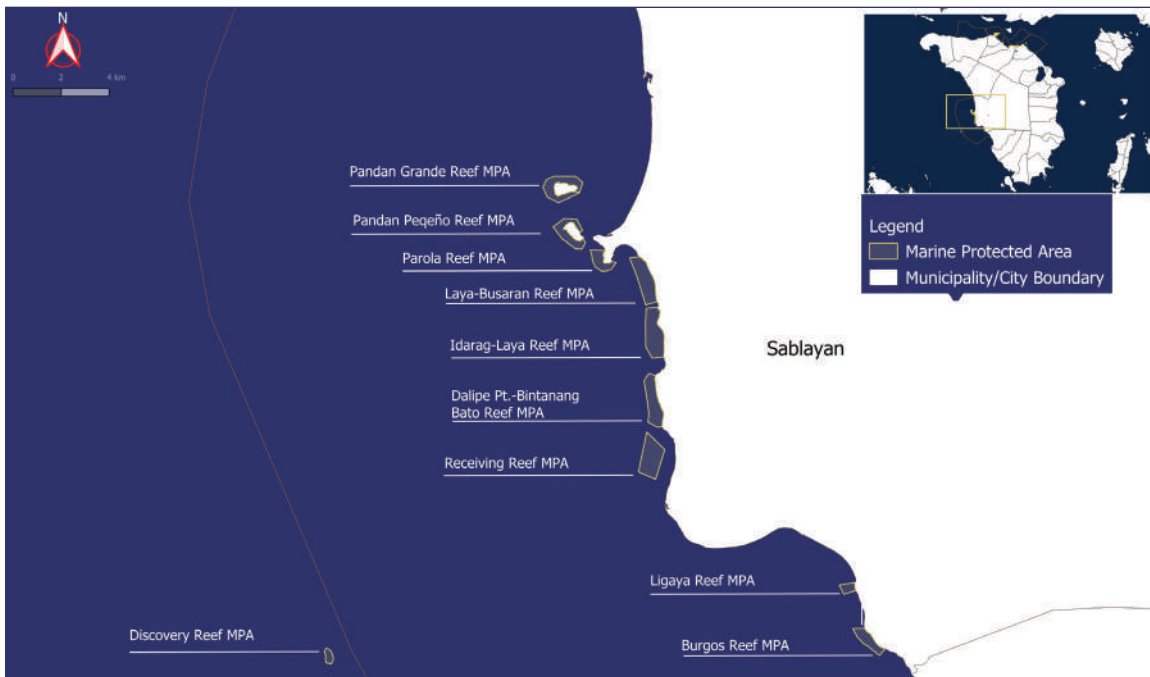
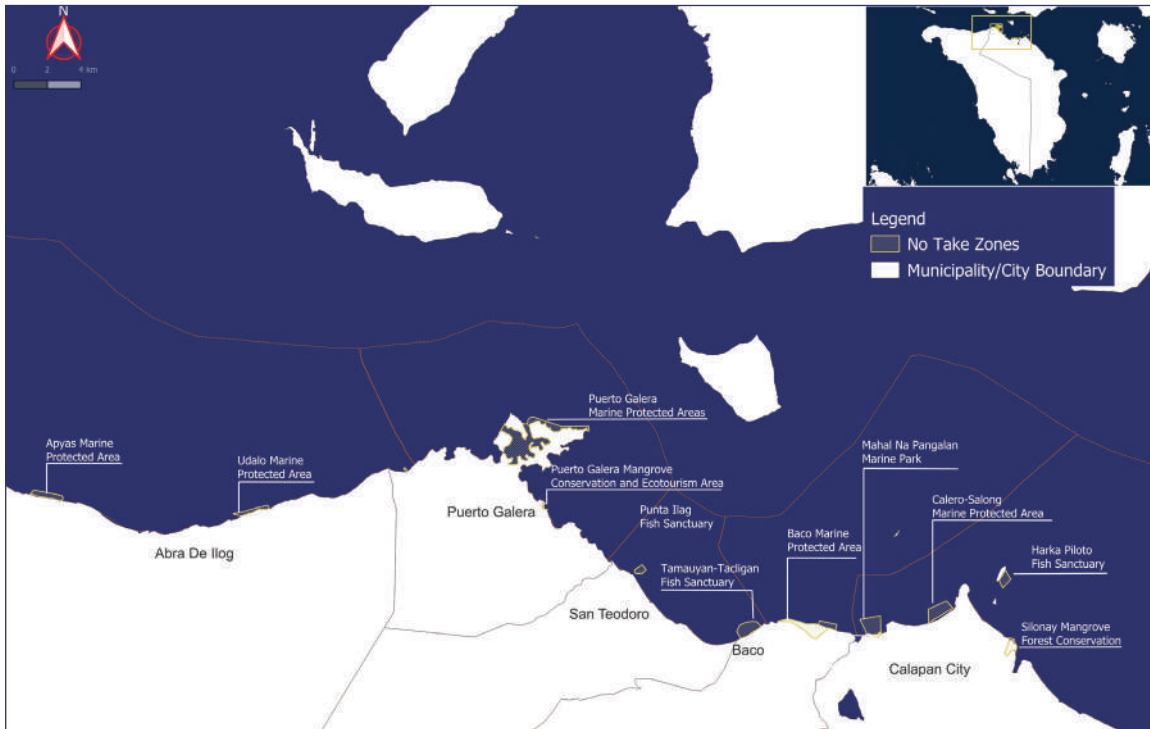
5 Reef-Positive Businesses in development in the Blue Economy



Working towards the conservation and restoration of mangroves, with the potential to sequester up to **250,000t** of CO₂

6 OUR CO-MANAGED MARINE PROTECTED AREAS: MINDORO

MINDORO MPA NETWORK



Signing of the co-management agreement

In 2021, the Local Government Units (LGUs) of Baco, Calapan, Puerto Galera, and San Teodoro signed agreements with Blue Alliance for the delegated management of the North Mindoro MPA network, comprising 9 MPAs and 62,000 ha of municipal waters. In mid-2023, the municipality of Abra de Ilog signed a similar agreement, adding 3 more MPAs and 50,000 ha of additional municipal waters. In 2024, an agreement was signed with Sablayan, adding 10 more MPAs spanning 76,000 ha.



ENFORCEMENT & COMPLIANCE

GENERAL UPDATES



Rangers

Blue Alliance has deployed 13 BAKOD members across key municipalities, alongside 75 Bantay Dagat personnel protecting coastal waters. A dedicated Pawikan Patroller in Calapan City monitors sea turtle nesting sites. Together, these frontline defenders safeguard marine biodiversity and strengthen community-led conservation in Marine Protected Areas. Rice incentives are provided to Bantay Dagat, BAKOD, and partner enforcement agencies i.e. BFAR, PCG, and PNP-Maritime. This initiative strengthens morale and recognises their tireless work in enforcing laws, conducting patrols, and preventing illegal fishing.

Puerto Galera Dive Ordinance

Puerto Galera is developing a new dive ordinance to elevate marine tourism standards. The office of the municipal environmental and natural resources officer has requested Blue Alliance Philippines support in its legal formulation. The ordinance will set stricter rules on diver conduct, professional standards, and marine life interaction, with certification, monitoring, and penalties to safeguard dive sites and protect Puerto Galera's world class reputation.



Sea Turtle Programme

Sea turtles are vital to marine ecosystems, yet they remain threatened by habitat loss, poaching, and climate change. The marine turtle programme focuses on the protection of nesting beaches, rescue of stranded turtles, and monitoring of local populations. Local conservation teams work with communities to ensure that turtle habitats are safeguarded and that accidental bycatch is minimised.



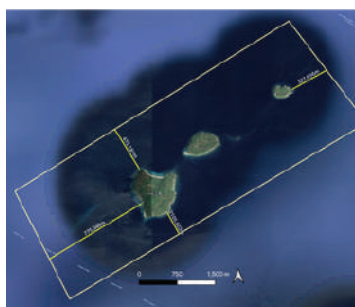
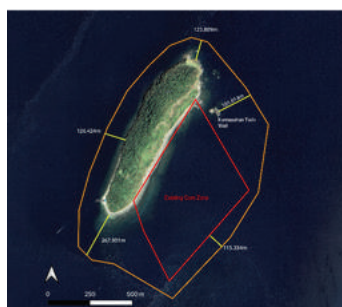
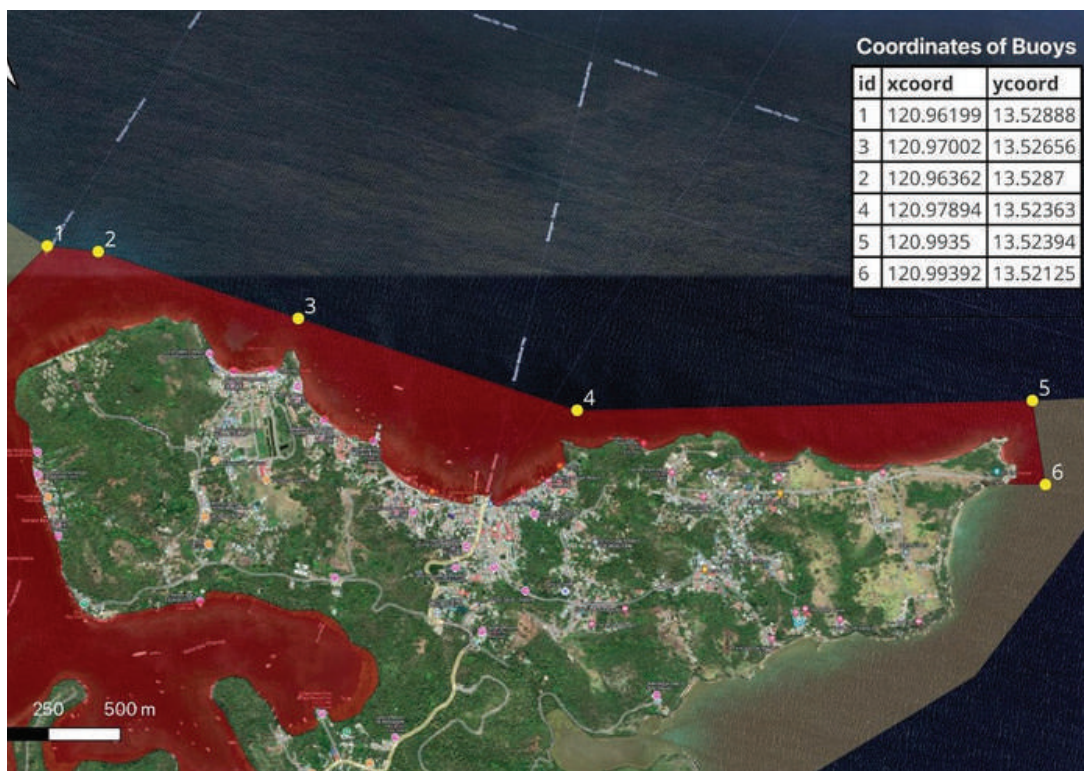
Paralegal support for law enforcement

By strengthening the legal framework around marine protection, enforcement efforts transition from reactive to preventive measures. This systematic approach allows authorities to track illegal activities, refine enforcement strategies, and build strong cases against repeat offenders.

ENFORCEMENT & COMPLIANCE

NEW MPA DESIGNATION

In 2024, new Marine Protected Areas (MPAs) were designated in the islands of Calapan allowing for enhanced protection of these critical habitats. These expansions were informed by scientific assessments and community consultations, ensuring that both environmental and socio-economic needs were addressed.



SCIENCE & CONSERVATION

GENERAL UPDATES

Experimental catch per unit of effort (CPUE)

CPUE was used to understand fisheries productivity across monitored sites when comparing annual catch per unit effort (CPUE) for 2023 and 2024. In 2023, fishers caught an average of 0.78 kilograms per hour. By 2024, this had increased to 1.02 kilograms per hour – a 22% increase.

Figure 1 shows how these catch rates changed over time, from August 2023 to January 2025. The trend suggests steady growth in catches until May 2024, after which levels stabilised.

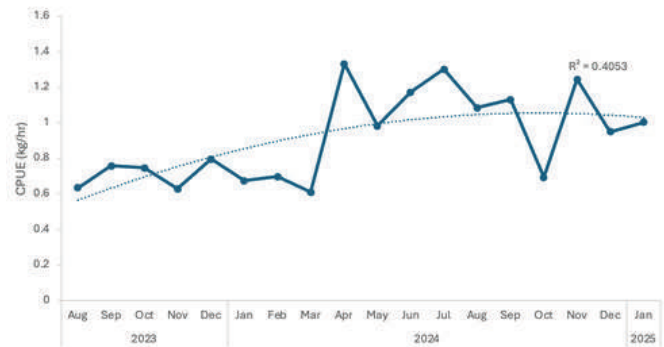
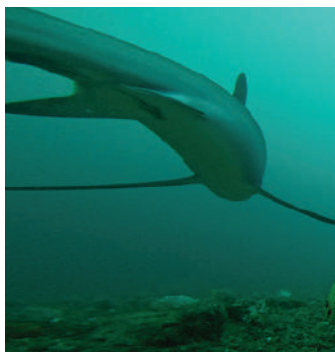


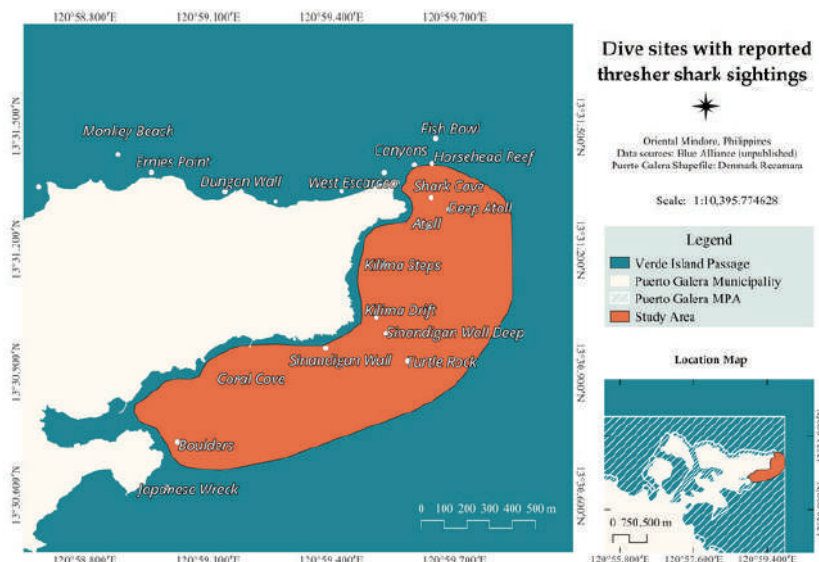
Figure 1 – Average CPUE for Mindoro between 01/08/2023 to 01/01/2025. The blue line is a polynomial trendline.



Baited remote underwater video

In 2024, a project was conducted to learn more about thresher sharks, which had been spotted but had not been scientifically documented in the area. Led by Blue Alliance and Large Marine Vertebrate Research Institute Philippines (LAMAVE), with support from local fishers and divers, the project used baited remote underwater videos (BRUVs) to record shark activity without disturbing the animals.

Before deploying the cameras, the team interviewed 42 divers and 44 fishers to understand where thresher sharks were seen most often. Cameras were then placed in those key areas starting in March 2024. Monthly camera deployments revealed that thresher sharks were present early in the year but not from June to September, suggesting seasonal movements. The only other species consistently seen was the spotted eagle ray. Video footage also helped identify both male and female thresher sharks, providing valuable clues about their reproduction and behaviour. A summary of findings is being prepared for the local dive community, and continued collaboration with dive shops, tourism groups, and local officials is being encouraged to support shark conservation and responsible tourism.



SCIENCE & CONSERVATION

GENERAL UPDATES

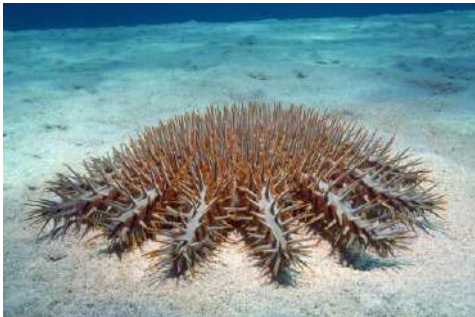
Reef Health

Long-term monitoring provides valuable insights into temporal changes in reef ecosystems and helps identify where and when interventions are needed. Blue Alliance has significantly expanded its reef health monitoring efforts from 22 stations in 2022 to 62 stations by the end of 2024. In total, 124 transects were assessed in 2024, many of which are currently undergoing validation.



Crown-of-thorns Starfish

Outbreaks of crown-of-thorns starfish (COTs), driven by nutrient pollution and predator loss, can devastate coral reefs. Since November 2024, 29,473 COTs have been collected in Puerto Galera, where the last outbreak occurred in 2022. Blue Alliance monitors monthly, responding when catch rates exceed 0.05 to safeguard reef health.



DENR BMB Coastal and Marine Division Discussions

As Blue Alliance expands in the Philippines, we are working with the Department of Environment and Natural Resources Biodiversity Management Bureau (DENR BMB) and other partners to align efforts in creating self-sustaining MPAs and restoring coral reefs. In 2024, discussions with DENR BMB Coastal and Marine Division focused on scaling our impact on marine conservation.



UBS Social Impact Forum

In January 2024, we had an incredible opportunity to showcase our work at the UBS Social Impact Forum in Singapore. Our Science and Communications Coordinator, Mary Grace Catapang, shared how we're building self-sustaining Marine Protected Areas (MPAs) in the Philippines — turning conservation into a lasting solution for both people and the planet. Grace also took this message to a global stage, delivering a powerful call to action at the sixth session of the UN Environment Assembly (UNEA-6) Leadership Dialogue.

KEY ECOLOGICAL INDICATORS SCORECARD



Coral reef area:
588 ha



Mean hard coral cover:
31%



Mean fish biomass:
218 kg/ha



Mean commercial fish biomass:
170.5 kg/ha

Coral bleaching event: **YES**

Key biodiversity area : **YES**

Spawning aggregation (SPAG) identified: **NO**

Crown of thorns starfish (CoTS) outbreak: **NO**

COMMUNITY DEVELOPMENT

LIVELIHOOD PROGRAMMES



The Dulangan, Puerto Galera

The Dulangan Seagrass Fisherfolk Association launched a fish cage project to enhance food security and livelihoods for 280 households dependent on local marine resources. Their first milkfish harvest reached 271 kg, surpassing the 200 kg projection by 35% through improved management and community participation. Encouraged by this success, the initiative will expand to cultivate 2,200 samaral (rabbitfish) over the next eight months.



Villaflor, Puerto Galera

To boost financial stability, Villaflor is diversifying products and improving market access for its 300 fisheries- and agriculture-dependent households. The Rice and Feeds Retail Project reduces travel for essentials, while a fish-selling structure ensures fair pricing and stable incomes. These efforts circulate local finances, fostering self-sufficiency and resilience. With support, Villaflor aims to scale operations and expand livelihoods.



Tabinay, Puerto Galera

Tabinay's rice trading, retail enterprise, and fish-selling structures thrived in 2024, reaching half of projected annual sales within six months. With a focus on reinvestment and diversification, the business ensures long-term growth and a stronger local presence. Supporting 320 households with affordable rice, it enhances food security and fosters economic resilience in the community.



Udalo, Abra de Ilog

The Samahan ng Mangingisda sa Bugtong (SMB) in Udalo, Abra de Ilog, is improving fishing efficiency for 140 households. To address income challenges, they launched the Payao Project, deploying fish aggregating devices (FADs) to attract fish, cut fuel costs, and boost catches. To ensure sustainability of FADs, we implement a strict monitoring of landings (species, size, maturity, etc.) to prevent overfishing and maintain healthy fish populations. This is not a CPUE campaign.

COMMUNITY AWARENESS

PUBLIC SUPPORT OF CONSERVATION



Our fundraising mechanisms reflect the growing commitment to marine conservation. Through compelling educational initiatives, strategic partnerships, and direct contributions, we have secured vital resources to protect MPAs and promote sustainable tourism.

- **BlueTalk** is a platform for discussion, awareness, and action. In 2024, we engaged 646 dive resort guests and 322 curious students, turned committed conservation advocates, who are now equipped with the knowledge to become active stewards of marine conservation.
- **Merchandise Partnerships Agreements** have strengthened our network of eco-conscious businesses, ensuring that every donation contributes directly to marine protection.
- **Conservation Contributors** have generously dedicated a portion of their earnings to sustain long-term initiatives that protect our oceans.

The first quarter of 2024 saw a surge in contributions, highlighting the deep connection between awareness campaigns and community-driven conservation. As we look ahead, diversifying and expanding these advocacy streams will be essential in sustaining the progress we have made in protecting our marine ecosystems.

By fostering dialogue on sustainability and community wellbeing, BlueTalks encourages guests to become active advocates for ocean protection, enriching both their travel experience and their understanding of conservation.



Department of Tourism memorandum of agreement

Blue Alliance Philippines and the Department of Tourism (DOT) signed a memorandum of agreement at PHIDEX 2024 to advance conservation and sustainable tourism. This collaboration unites NGOs and the Department of Tourism in protecting marine ecosystems while promoting responsible tourism.

THE PHILIPPINES NORTHEAST PALAWAN MPA NETWORK



Northeast Palawan

The Palawan Archipelago is known as the Philippines' last ecological frontier. Its exceptional marine biodiversity and productive coastal habitats have earned it designation as a UNESCO Man and Biosphere Reserve. The region's coastal and marine ecosystems include coral reefs with 379 species of corals, more than 1,000 marine fish species, seagrass meadows with 13 species, and mangrove forests with 31 species.

Palawan is part of the 50 Reefs Initiative, a portfolio of fifty coral reefs identified as having the potential to survive the impacts of climate change and aid in repopulating neighbouring reefs over time. Northeast Palawan is also part of the Coral Triangle - a geographical region with unmatched reef fish and marine life diversity.



794,000 ha of coral reef ecosystems with enhanced biodiversity protection and control of destructive and unsustainable fishing activities



30+ threatened species being protected, including sharks, turtles, and corals



Working towards enhancing the livelihoods of **14,000+** coastal community members (primarily fishers)



23 full-time and part-time jobs created in our MPAs and in our Reef-Positive Businesses



5,162 patrol hours conducted between January and December 2024*.



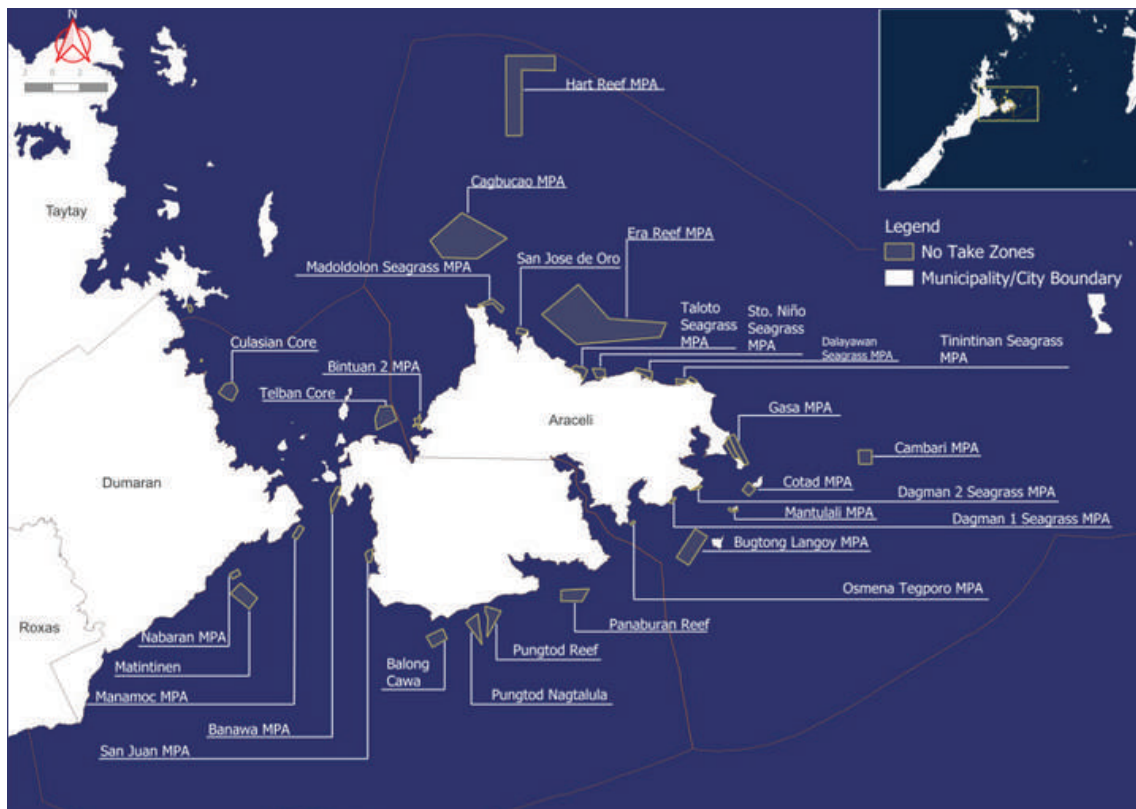
5 Reef-Positive Businesses in development in the Blue Economy



Working towards the conservation and restoration of mangroves, with the potential to sequester up to **250,000t** of CO₂e

NORTHEAST PALAWAN MPA NETWORK

In 2024, a series of Service Agreements were signed across multiple municipalities in Palawan, reinforcing a co-management framework for Marine Protected Areas (MPAs).



Beyond enforcement and habitat conservation, the agreements also highlight the importance of capacity building and awareness programmes. Through training sessions, workshops, and community education campaigns, local stakeholders are being equipped with the knowledge and skills needed to actively participate in conservation initiatives.

Despite the distinct conservation challenges faced by El Nido, Roxas, and Dumaran, these co-management agreements reflect a shared vision for the future of Palawan's marine ecosystems. By forging strong partnerships, reinforcing enforcement efforts, and empowering local communities, they lay the groundwork for a dynamic and adaptive network of MPAs - one that does not merely aim to protect biodiversity, but to actively restore and sustain it.



ENFORCEMENT & COMPLIANCE

GENERAL UPDATES



Construction of Bantay Dagat Station

A new ranger station was built in San Jose de Oro, Araceli. This will allow for enhanced patrol efforts, deter illegal fishing, and address other environmental threats.

Inter-agency stakeholder meeting

In October 2024, the Bureau of Fisheries and Aquatic Resources (BFAR) and Blue Alliance held a meeting in Dumarán and Araceli with key stakeholders to strengthen fisheries law enforcement and combat illegal, unreported and unregulated fishing. The meeting focused on enhancing collaboration, building capacity, and improving surveillance.



Establishment of Local Task Force

The signing of an MOU established the Fisheries Enforcement Task Force for Araceli, Dumarán, and Roxas, strengthening fisheries law enforcement and promoting sustainable marine management. The agreement unites key stakeholders to combat illegal, unreported, and unregulated fishing, and support local communities' livelihoods. This partnership enhances local enforcement capacity and ensures better representation and compliance with fisheries regulations.

Maintenance of Equipment

Speedboats, outriggers, and other water assets undergo regular maintenance to ensure reliable performance for enforcement activities in target areas. These vessels play a crucial role in patrolling municipal waters, responding to illegal fishing activities, and safeguarding marine resources. Without regular upkeep, their effectiveness in law enforcement operations may be compromised, leading to delays, increased repair costs, and potential gaps in enforcement coverage.



Apprehensions

Several successful apprehensions were made across Araceli, Roxas, and Dumarán in Palawan, targeting illegal fishing activities that threaten marine ecosystems.

SCIENCE & CONSERVATION

GENERAL UPDATES

Reef Health

We monitor coral reefs not only through coral-related metrics but also by assessing the diverse flora and fauna that inhabit and surround them. Reef fishes, in particular, are key indicators of reef health. Blue Alliance conducts reef health monitoring through SCUBA surveys under two main regimes: (i) coral cover and (ii) reef fish biomass. Long-term monitoring provides critical insights into how reef ecosystems change over time and where interventions may be needed. In 2024, we expanded our monitoring to include Palawan. The results are still undergoing data processing and validation.



Commercial Fish Assessment

While Blue Alliance monitors all reef-associated fish to assess overall reef health, a specific subset, commercial or fishable species, is used to evaluate the effectiveness of our conservation measures. This monitoring is conducted via SCUBA, typically on or near the same two transects per station used for reef health assessments. Commercial fish assessments provide the scientific basis for determining the health and status of fish stocks, including estimates of population size, fishing mortality, and recruitment rates. In Palawan we monitored 38 transects. Data summaries are available for 24 of the transects.



KEY ECOLOGICAL INDICATORS SCORECARD



Coral reef area:
7,211 ha



Mean hard coral cover:
in progress



Mean fish biomass:
201 kg/ha



Mean commercial fish biomass:
104.2 kg/ha

Coral bleaching event: **YES**

Key biodiversity area : **YES**

Spawning aggregation (SPAG) identified: **NO**

Crown of thorns starfish (CoTS) outbreak: **NO**

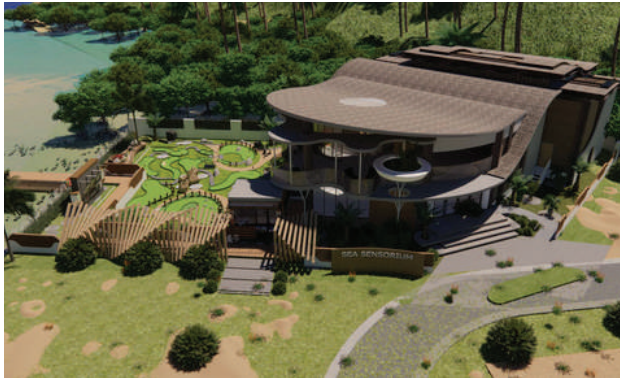
REEF-POSITIVE BUSINESSES

GENERAL UPDATES



Coral Reef Safari

Blue Alliance has established BlueWild EcoVentures Ltd. as a limited company in the Philippines. The company is 100% owned by Blue Alliance Philippines. BlueWild EcoVentures Philippines is a unique ecotourism company offering innovative coral safari day tours with dedicated eco-guides, creating 5 new jobs in the MPA. Visitors have the opportunity to experience a unique guided scuba adventure with a purpose – to deepen connections with coral reef ecosystems. These coral safari day tours help highlight the connection between Marine Protected Areas, biodiversity preservation, and improved livelihoods of local communities.



Sea Sensorium

Blue Alliance continues preparation for the Sea Sensorium ecotourism project, a highly engaging visitor centre that allows visitors to connect with marine life in new and exciting ways, through high-tech interactive experiences. In 2024, we explored collaborations with new partners specialising in the entertainment industry to take over the development of the sea Sensorium. The Sea Sensorium project has evolved from its original design with an improved concept now having been finalised. We are supporting our partners in preparing marketing materials and in fundraising with impact investors.



EXPECTED BENEFITS AND OUTCOMES

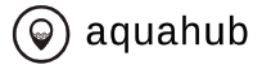


Financial support to Blue Alliance Philippines



Increased awareness around MPAs and coral reef conservation

REEF-POSITIVE BUSINESSES



Aquahub, mangrove crabs and sea cucumbers

Blue Alliance has established Aquahub Philippines Ltd. as a Philippines limited company. Aquahub is 100% owned by Blue Alliance Philippines. Aquahub is dedicated to pioneering sustainable aquaculture of mangrove crabs and sea cucumbers while ensuring the protection of marine biodiversity.

Over the past few years, we have focused on improving survival rates in mangrove crab farming through enhanced protocols, strategic partnerships with pond owners, and the establishment of a hatchery-nursery system. In March 2024, we achieved a breakthrough with a 15% survival rate by incorporating hatchery-sourced crablets and a nursery system. In parallel, our sea cucumber aquaculture efforts have gained traction, with promising results in hatchery and grow-out phases, complementing our broader goal of developing high-value, sustainable marine commodities.

As part of our long-term strategy, we are scaling up operations to enhance production and market impact. Our hatchery-nursery expansion is set to produce over a million mangrove crabs annually in the upscaling phase. At the same time, our grow-out farms are projected to expand from 20 hectares to 200 hectares by 2028, with an estimated annual harvest of 200,000 adult crabs. Sea cucumber production is also expected to scale alongside, with hatchery and nursery discussions currently underway for a site in Guimaras Island following a successful site survey. We have also secured two new grow-out farms, further supporting our production goals.

Key organisational milestones include the recruitment and onboarding of the Aquahub National Director, and strengthening of strategic partnerships with Western Philippines University (WPU) and the Southeast Asian Fisheries Development Center (SEAFDEC), both of which are vital to our Research & Development and capacity-building initiatives. To ensure long-term sustainability and financial stability, we are building a strong brand presence and working to secure enduring partnerships across the value chain.

EXPECTED BENEFITS AND OUTCOMES



Recovery of wild stocks of mangrove crabs & sea cucumber



Technical upskilling of community members in sustainable aquaculture practices

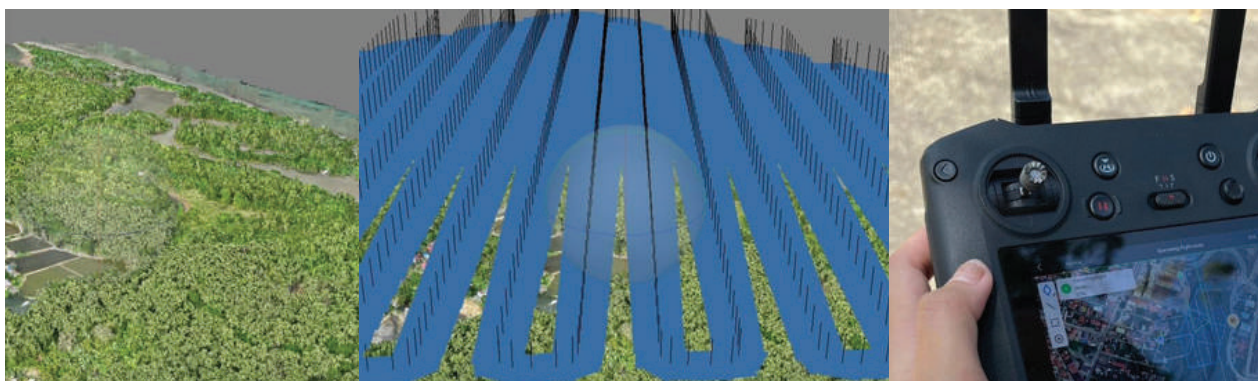


Significant export revenues



Financial support to Blue Alliance Philippines

BLUE CARBON PROJECT

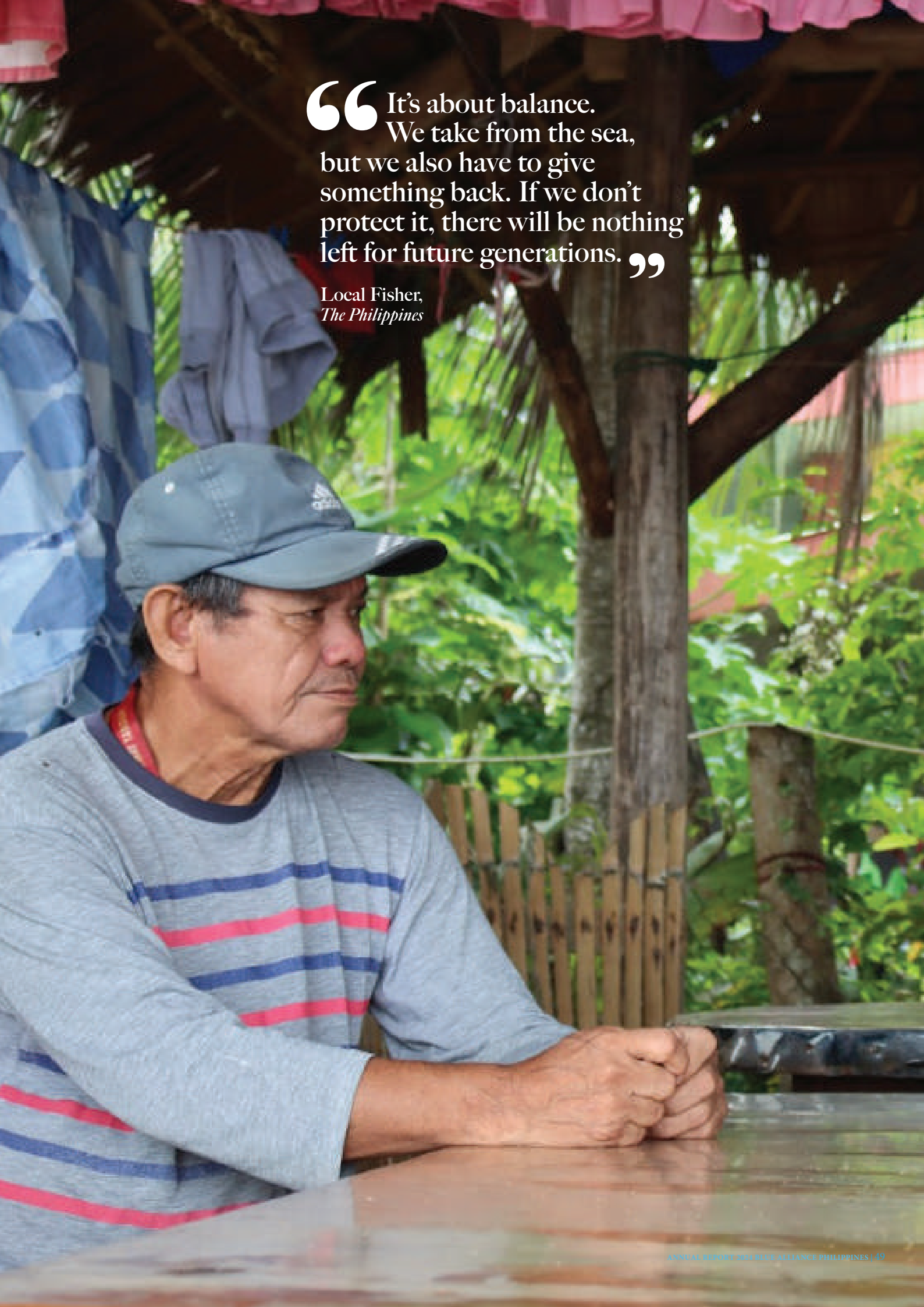


We are harnessing the power of drone photogrammetry to map key sites for our Blue Carbon Project in partnership with **Uba Sustainability Institute**. By capturing high-resolution aerial images and stitching them together, we generate detailed, up-to-date maps that enhance our ability to study and protect these vital coastal ecosystems.

Above is a portion of one of the maps we've created. Through mangrove conservation and carbon financing, we're taking meaningful steps toward safeguarding our blue carbon reserves, supporting healthy mangroves for a healthier planet.

We have made significant progress in our blue carbon project with the identification of our 202 ha pilot site in North Oriental Mindoro. Scoping of potential sites was also conducted in our new MPAs in Abra de Ilog, Occidental Mindoro and Araceli, Palawan. This project aims to conserve and rehabilitate mangrove forests in collaboration with local communities, and eventually issue credits to generate revenues for MPAs.





“ It’s about balance.
We take from the sea,
but we also have to give
something back. If we don’t
protect it, there will be nothing
left for future generations. ”

Local Fisher,
The Philippines

7 2025 GLOBAL OUTLOOK & TARGETS



135 direct jobs
created in the Blue Economy
within our marine protected areas.



2,200,000 ha
Grow the marine protected areas under our
management in Indonesia, the Philippines,
and Zanzibar to 2,200,000 hectares.



18,000 hours
of patrols conducted



24,000
Local fishers
benefitting from increased food
security and improved livelihoods



SCALABLE APPROACH TO SAVE 25% OF WORLD CORAL REEFS

Our model is scalable and replicable. Currently, Blue Alliance manages 1,700,000 hectares of large MPAs across Indonesia, the Philippines and Tanzania. With steady growth, Blue Alliance aims to directly manage 9,000,000 hectares of large MPAs by 2030, regenerating 1.5% of world coral reefs, and benefiting more than 150,000 local community members, most of whom currently live below the poverty line. Central and local governments are supportive of this expansion and have a fairly large stock of inactive MPAs. Blue Alliance has already received proposals from our three current countries of operation to more than triple the current areas under management mandate.

By 2035, through strategic partnerships and incubation programmes, we aim to expand the impacts by implementing this model across 70,000,000 hectares of large MPAs. This ambitious goal will provide a long-term solution for 25% of world coral reefs and will directly benefit more than 3 million local inhabitants.

8

OUR
PARTNERS



GOVERNMENT PARTNERS

We help governments deliver on their sustainability promises. For each MPA, Blue Alliance is the local body responsible for carrying out all operational functions. Management activities are aligned with government policy in each case. By delegating the day-to-day management of MPAs to Blue Alliance and our local partners, governments can focus on core functions such as regulation and enforcement. They also have an oversight role, including approving the annual objectives and plans for each MPA, based on insights from advisory committees made up of stakeholders.

In each country where Blue Alliance operates, we work closely with local authorities as part of our proven co-management approach:

The Philippines

- Department of Environment and Natural Resources
- Province of Oriental Mindoro
- Local governments Units (LGUs) of Baco, Calapan, Puerto Galera y San Teodoro, Abra de Ilog, Sablayan, Roxas, Araceli, Dumarán, and El Nido
- Bureau of Fisheries and Aquatic Resources



OUR STRATEGIC FUNDING PARTNERS

Our unique blended finance vehicle provides up-front investment and early stage working capital for the effective management of MPAs, and implementation of sustainable blue economy initiatives. We work closely with our funding partners and regularly report on progress and our long-term impacts:



The Global Fund for Coral Reefs (GFCR) is the world's leading financial vehicle to ensure a future for coral reefs and related ecosystems. The coalition strengthens the resilience of coastal reef ecosystems, communities, and economies by mobilising new public and private resources that advance sustainable businesses and innovative financial solutions. The GFCR has been providing long term support to our MPAs and Reef-Positive Businesses programmes in the Philippines and Zanzibar since 2024.

BNP Paribas has committed €200 million in impact investments to support enterprises that generate positive outcomes in climate action, local development, social inclusion, and natural capital preservation. BNP Paribas is our anchor investor in the Blue finance impact loan facility.

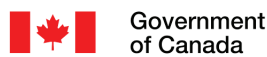
The Swiss Re Foundation reflects the social and humanitarian values of Swiss Re. Together with partners and Swiss Re employees, they support efforts to strengthen societal resilience in countries where we operate and in targeted developing regions. To advance innovative solutions to the world's climate and health challenges, they offer tailored financing and access to Swiss Re expertise, build actionable evidence and amplify impact through collaboration with aligned partners and with Swiss Re employees. They are providing long-term support to our work in the Philippines.



Funded by the Foreign, Commonwealth & Development Office (FCDO), **UK Aid Direct** supported small and medium sized civil society organisations (CSOs), based in the UK and overseas, to achieve sustained poverty reduction and the United Nations's Global Goals. UK aid is supporting the development of our MPAs and Reef-Positive Businesses activities in Indonesia.

The UBS Optimus foundation mitigates climate change while supporting vulnerable communities and sustaining biodiversity, which sits at the core of their environmental philanthropy mission. The foundation is supporting us both in improving the monitoring of impacts of our conservation efforts as well as developing our portfolio of Reef-Positive Businesses in the Philippines.

The Ocean Risk and Resilience Action Alliance (ORRAA) is the only multi-sector collaboration connecting the international finance and insurance sectors, governments, multilateral organisations, civil society, and local partners to pioneer finance and insurance products that incentivise investment into coastal and ocean resilience, and through Nature-Based Solutions. The ORRAA supports the development of the blended finance vehicle. The impact loan facility is part of their Sea Change Impact Financing Facility (SCIFF), a collaborative effort to develop an open ocean financing architecture designed to drive at least USD\$1 billion of private investment into coastal and ocean ecosystems, with a focus on the Global South, by 2030.



BNCF from IUCN: Blue Natural Capital Financing Facility (BNCF) supports the development of sound, investable Blue Natural Capital (BNC) projects with clear ecosystem service benefits, based on multiple income streams and appropriate risk-return profiles. BNCF is supporting the development of our approach in the Philippines.

The Government of Canada has played a key role in advancing global marine conservation efforts through targeted aid supporting sustainable ocean governance and biodiversity protection. They supported our work in the Philippines as well as the development of the blended finance vehicle.

The GENEM Foundation supports sustainable livelihoods in emerging markets by providing catalytic social investments and grants to revenue-generating enterprises that benefit marginalized communities. The foundation is supporting our portfolio of enterprises in the Philippines.

8 OUR PARTNERS



Catalytic climate finance facility and Convergence: the Catalytic Climate Finance Facility accelerates the implementation of high-impact, ready-to-scale financial structures, filling a market gap in mobilizing private capital for climate action in developing economies. The initiative is a partnership between Climate Policy Initiative and Convergence, who are combining their expertise to turn innovative financial vehicles into scalable solutions, to increase the available investable pipeline and grow the climate finance market. They are supporting the upscaling of our blended finance vehicle globally.



The Levine Family Foundation in Switzerland focuses primarily on marine conservation, supporting charitable initiatives through grants and commissioned research to promote ocean health and sustainability. They support our activities at a global level for the management of the MPAs and the Reef-Positive Businesses.



Milkywire is an impact-driven organization that enables businesses to invest in high-integrity climate and nature projects—such as carbon removal and biodiversity protection—creating measurable environmental impact across more than 40 countries. They support our activities in Banggai, Indonesia.



Humanity Insured, supported by the Howden Foundation, provides premium subsidies for innovative insurance solutions that help vulnerable communities—such as farmers, coastal populations, and displaced individuals—prepare for and recover from climate shocks like drought and extreme heat. They support our parametric climate insurance in the Philippines developed with Axa Climate.



AXA Climate, a division of the AXA Group, supports public and private organizations in adapting to climate and environmental challenges through parametric insurance, climate risk consulting, sustainability training, and data-driven tools that promote regenerative business practices. They provide our parametric climate insurance in the Philippines.



Simmons & Simmons Simmons & Simmons is a global law firm deeply committed to pro bono work, supporting social and environmental justice initiatives—including pioneering legal frameworks for ocean conservation. They supported the legal design and drafting of the impact loan facility.

CONNECT WITH US ON SOCIAL MEDIA TO STAY UPDATED ON OUR PROJECTS



connect@bluealliance.earth



www.bluealliance.earth



[Blue Alliance Marine Protected Areas](#)



[@bluealliance_mpa](#)



[@Blue Alliance](#)



[@BlueAllianceMPA](#)

An underwater photograph showing a vibrant coral reef on the right side, with numerous colorful fish swimming in the clear blue water. The scene is captured from an overhead perspective, looking down into the ocean.

Blue Alliance

MARINE PROTECTED AREAS

REFERENCE AND ADMINISTRATIVE INFORMATION

Organisation Name

Blue Alliance Marine
Protected Areas

Registered Office and Operational Address

Blue Alliance MPAs
12 Av. Draio de la Mar
13620 Carry-le Rouet,
France

Blue Alliance Philippines

Unit J, 345 Space Rentals,
Feraren Hills, M. Roxas Drive,
Brgy. Lumangbayan, Calapan
City, Oriental Mindoro,
Philippines 5200